



Signage for recycLA Tenant Participation

Download and Print Instructions

With the new recycLA, solid waste franchise agreement, it is very important that your tenants are aware of the program benefits and know how to participate successfully. Athens has created a series of signage that you might find useful to download, print, and hang near your waste containers and collection areas. (Download instructions are below.)

Printing: Only print the signs that are specific to your property and waste set up. Avoid cutting off borders when printing by doing the following: save document, open PRINT, find PAGE SCALING, and select FIT TO PRINTABLE AREA.

Laminate/Velcro: For long-term durability, we recommend laminating your signs and using Velcro tape to affix them to the wall or similar surface. (Velcro tape is available at hardware, crafts, and office supply stores). If translation is necessary, please let your Athens' Account Manager know.

Download From Internet: Browsers differ on how to save files. Open the link in your browser, then find where to save the file. The following are the widely used browsers:



INTERNET EXPLORER



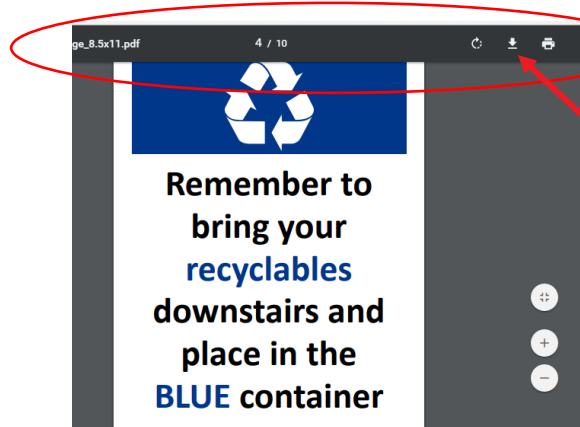
FIREFOX



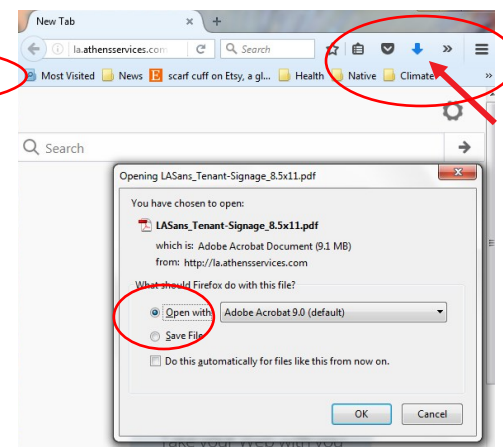
GOOGLE CHROME



Hover cursor near bottom of image until grey box pops up. Select the save button (first icon on left). Choose where you would like the file saved on your computer.



Hover cursor near top of page above image until grey box pops up. Select the save button (middle icon on right). Choose where you would like the file saved on your computer.



Google Chrome will automatically pop up this window. Choose to Save or Open the PDF in the browser. If you save it, click the blue arrow (top right) to open the document. Now click "File" then "Save As." Choose where you would like the file saved on your computer.